



Version Control



Visual

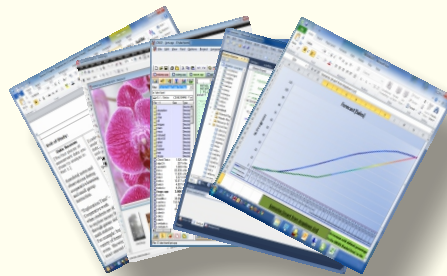
is only the beginning

Cross Platform
Power Users
Internet
Intel
Guardian
UNIX
OSS
Versions
Remote editing
Analysis
Projects
Security
Builds

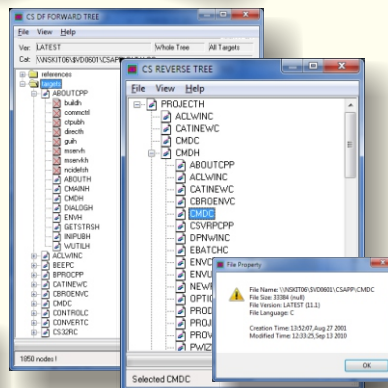
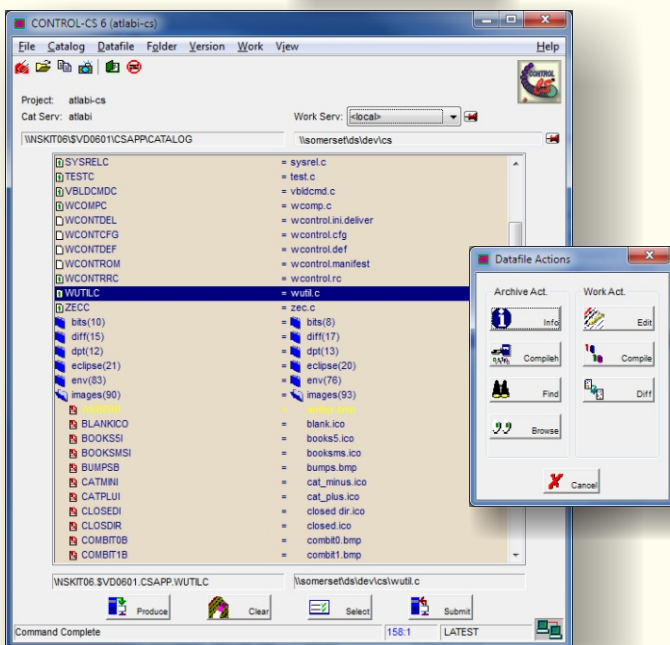
Now visual CONTROL-CS has taken the standard far beyond source control. The same world leaders of IT have chosen this client-server software management system to be the central element to their multi-platform development suite.

Projects personalize archive and work area details.

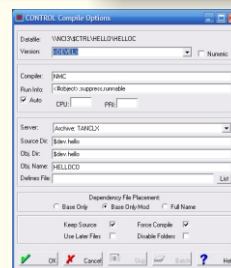
**Projects personalize
archive and work
area details.**



Launch your favorite editor or compiler. Each file type can have its own personality -- one may require a word processor while another might need a painting program. You can even use your PC editor to change work files located on a server!

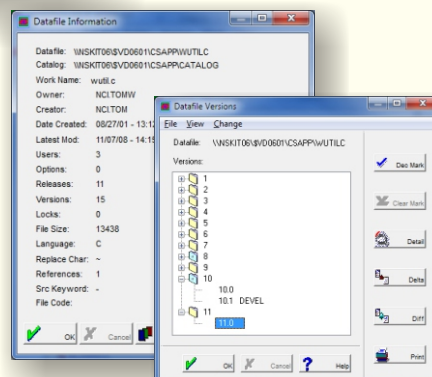


Advanced integrated tools, like *host compile* and *tree analysis* promote better understanding and control of source code. When you're ready to build everything, our nciGENESIS™ product will efficiently automate complex system building.

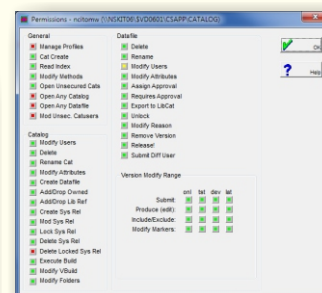


Security Profiles provide flexible fine grained access control.

The relationship between the archive and work area is shown in the main window. Icons show the type of file. Indicators show which changed last. Colors indicate status. Click to browse, compile, show differences, etc.



View versions, dates, history, differences and other information about the archive.



A CONTROL-CS session connects your workstation to an HP NonStop, UNIX, Linux or Windows server. The streamlined communication processing eliminates risk of security or reliability problems while providing rapid data transfer.

The 'PRODUCE' button transfers fresh copies of one or more files from the central archive to your workstation or any of the CS servers. By specifying 'for edit', the version in the archive is locked to identify your intentions.

CONTROL-CS is compatible with standard CONTROL Datafiles.

This allows terminal-based users and batch programs to share information with network users.

Real-time
Groupware
for
Team
Coordination

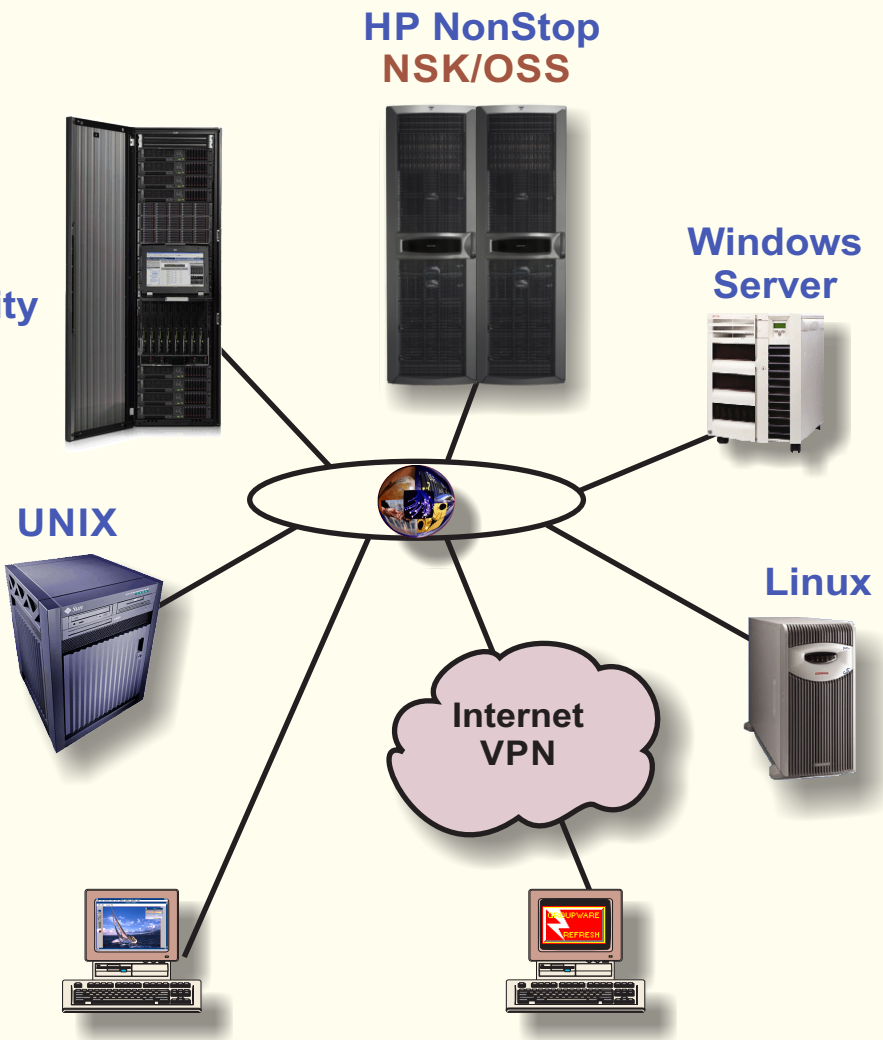
HP Intergrity

With temporary work files on your PC or target server, CONTROL-CS helps you to launch your favorite modification and testing tools, letting you experiment without affecting others.

When changes are complete click the 'SUBMIT' button to cause all changed files to be merged back into the CONTROL server archive.

As the archive changes, others in your team are alerted in real-time.

Cross Platform
Development
Local or Remote



CONTROL-CS is not just a graphical front end to a command-line tool, but designed as a distributed client-server tool from the ground up. With integrated communication and intuitive visual operation, you can be up and running in minutes.

It promotes geographical coordination, making tele-commuting and outsourcing much more reliable. Using universal time coordinates, tracking changes between groups located on different continents is a reality.

CONTROL-CS is native to multiple platforms. The same client simultaneously works with Windows, UNIX, OSS and NonStop Kernel operating systems. This allows you to check-out, check-in, compare and even compile between two dissimilar environments. When you move from one OS to another, you don't have to change your tools, procedures or staff. In fact you don't even have to change your archive.

CONTROL-CS is a dynamic and growing product. The latest version introduces enormous security enhancements as well as new integrated compile capabilities. If you're an existing CONTROL user or brand new to the NonStop world, ask for a no obligation trial.

CONTROL-TMCS

Easy to setup, learn and use

With its intuitive graphical interface, built-in tutorial and extensive on-line help, CONTROL-CS moves you quickly from beginner to expert.

Use with any development platform

Whether you use a platform like Visual Studio, Eclipse or just your own favorite set of PC tools, Control-CS will help. Simply checkout a set of files from a CS server directly to a work area on your PC. Compose, edit, compile or test those files and when done, checkin the new version of all changed files. You can even deploy the project to different server.

Reliable

CONTROL and CONTROL-CS have established an unequalled record of reliably preserving a major corporate asset -- your software. Using time proven approaches (like taking before images), CONTROL-CS protects software like no other product on the market.

Security

Most PC version control systems rely solely on the 'read-only' attribute to protect their archives. Many server systems are subject to serious network security holes. CONTROL-CS' security offers a flexible but reliable security profile system which lets you define limitless user classes. Archive files contain access lists that clearly regulate who can change or even read information.

Cross Platform Development

With CONTROL-CS, you can develop once and deploy across different servers. Archives and work areas can be anywhere on your network. A single click transfers files to the appropriate place in the appropriate format -- quickly and seamlessly.

There is no need to train your staff on different tools and operating systems. CONTROL-CS can even launch compiles and builds directly on the server.

Visual Diff & Merge

Making major changes? The visual difference and merge functions can help. Merge can analyze two different sets of changes made against one file and show compatibility and conflicts. Use it when more than one person needs to work on the same module or for major overhaul projects.

Team development support

CONTROL-CS employs real-time "groupware" updates. Each developer sees what changes others make from any location.

Tree & Build Analysis

Our tree analysis feature reads selected files in a directory, builds a complete dependency graph to show you how files fit together. From this you can automatically create or update a build script. You'll just love it.

Remote Compile, Auto Dependency and Referential Integrity

A mouthful! What it means is that by clicking a single button, CONTROL-CS will produce a version of a file and all its include, copy and other dependency files; start a compiler on your server; and record & display the results.

Internet/Intranet ready

CONTROL-CS can communicate on your LAN, use dedicated or VPN connections or work directly as a true Internet server. You can even use it locally as a stand-alone tool. This lets you coordinate work regardless of where your team is physically located.

For more information and pricing, contact:

Network Concepts, Inc.
88 E. Main St.
Mendham, NJ 07945 USA
+1.973.285-0202
email: nci@nci-sw.com

See our web page for local distributors:
www.nci-sw.com

business partner



Support for
COBOL, TAL, C/C++
HTML, JAVA
& others